

Fig. 1

- Elevated socket strips are available in 5 different heights:
- 316...006 uses pin # 0153-1
- 316...003 uses pin # 0153-2
- 316...007 uses pin # 0153-3
- 316...008 uses pin # 0153-4
- 316...001 uses pin # 0153-5
- See page 136 for details.
- Hi-Rel, 4-finger BeCu #30 contact is rated at 3 amps. See page 208 for details.
- Insulators are high temp. thermoplastic.

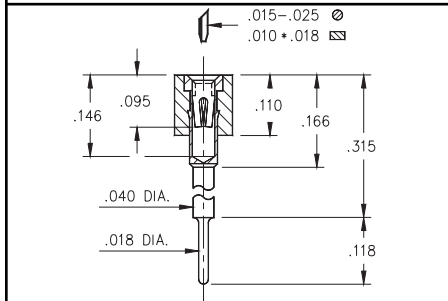
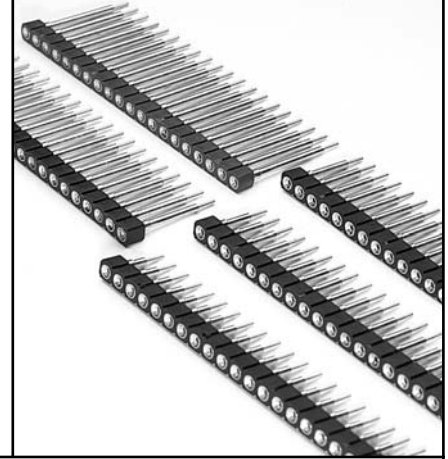


Fig. 2

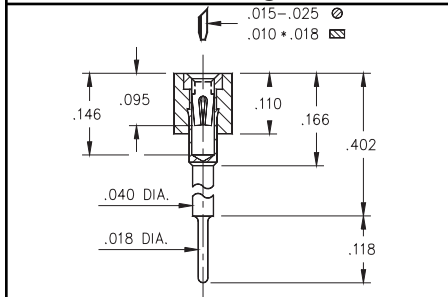


Fig. 3

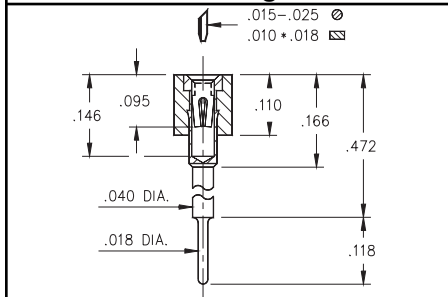


Fig. 4

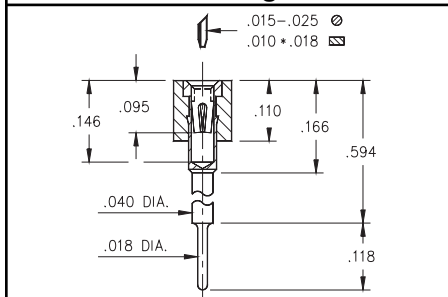


Fig. 5

Ordering Information

Fig. 1	Series 316...006 Standoff Height = .236
	316-XX-1__-41-006000 Specify # of pins → 01-64
Fig. 2	Series 316...003 Standoff Height = .315
	316-XX-1__-41-003000 Specify # of pins → 01-64
Fig. 3	Series 316...007 Standoff Height = .402
	316-XX-1__-41-007000 Specify # of pins → 01-64
Fig. 4	Series 316...008 Standoff Height = .472
	316-XX-1__-41-008000 Specify # of pins → 01-64
Fig. 5	Series 316...001 Standoff Height = .594
	316-XX-1__-41-001000 Specify # of pins → 01-64



XX=Plating Code
See Below

For RoHS compliance
select \diamond plating code.

SPECIFY PLATING CODE XX=	13 \diamond	93		43 \diamond
Sleeve (Pin)	10 μ " Au	200 μ " Sn/Pb		200 μ " Sn
Contact (Clip)	30 μ " Au	30 μ " Au		30 μ " Au